

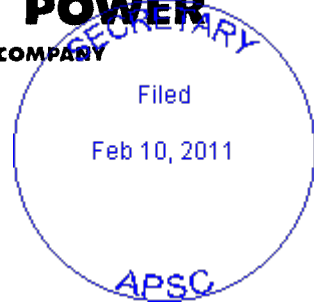
600 North 18th Street
Post Office Box 2641
Birmingham, Alabama 35291

Tel 205.257.1000

January 28, 2011



A SOUTHERN COMPANY



Kimberly D. Bose, Secretary
Federal Energy Regulatory Commission
888 First Street N.E.
Washington, D.C. 20426

Re: Holt Hydroelectric Project (FERC No. 2203-013) – Transmittal of Written Transcripts from Joint Agency and Public Meetings on December 1, 2010

Dear Secretary Bose:

Alabama Power Company (Alabama Power) filed the Pre-Application Document (PAD) and Notice of Intent (NOI) to relicense the Holt Hydroelectric Project (FERC No. 2203-013) on August 27, 2010. On December 1, 2010, Alabama Power held a daytime Joint Agency Meeting at the Project in Holt, Alabama and also held an evening Public Meeting in Tuscaloosa, Alabama. Enclosed are the original plus six copies of the official written transcripts for both meetings, as required by 18 C.F.R 16.8 (b) (ii) (4). Alabama Power is also including copies of the presentation and Project information prepared for both the Joint Agency and the Public Meetings.

You will note in the evening transcript that the meeting attendees had also participated in the day session, so the evening meeting was closed after waiting an appropriate time for any new meeting attendees.

If there are any questions related to this filing, the NOI or PAD, please contact me by phone at (205) 257-1268 or email at BKLOVETT@southernco.com.

Sincerely,

Barry Lovett
Hydro Licensing and Compliance
Alabama Power Company

BKL:krs

Enclosures

cc: Jeanne Edwards, Federal Energy Regulatory Commission
Holt Stakeholder List

Chief of Operations
ADCNR - Marine Police Division
64 North Union Street
Montgomery, AL 36130

Alabama Forestry Commission
P.O. Box 302550
Montgomery, AL 36130

Alabama Office of The Governor
RE: FERC Projects
State Capitol
600 Dexter Avenue
Montgomery, AL 36130

Alabama Public Service Commission
Secretary
P.O. Box 304260
Montgomery, AL 36130

U.S. Bureau of Indian Affairs
Eastern Regional Office
545 Marriott Drive, Suite 700
Nashville, TN 37214

Engineering Staff Southern Region
Georgia Regional Forester South Region
5645 Riggins Mill Road
Dry Branch, GA 31020

Advisory Council on Historic Preservation
Office of Project Review
Old Post Office Building
1100 Pennsylvania Avenue NW
Washington, DC 20004

U.S. Bureau of Indian Affairs
Solicitor's Office
1849 C Street NW
Washington, DC 20420

U.S. National Park Service
U.S. Department of The Interior
100 Alabama Street SW
Atlanta, GA 30303

West Alabama Chamber of Commerce
2200 University Boulevard
Tuscaloosa, AL 35401

Damon Abernethy
Alabama Wildlife & Freshwater Fisheries
64 N. Union Street, Suite 551
Montgomery, Ala. 36130

Bob Allen
United States Army Corp of Engineers
109 Saint Joseph Street
P.O. Box 2288
Mobile, AL 36628-0001

Pres Allinder
Alabama Department of Public Health
P.O. Box 303017
RSA Tower
Montgomery, AL 36130-3017

Wesley Andrews
Seminole Tribe of Florida
Ah-Tah-Thi-Ki Museum
HC 61 Box 21 A
Clewiston, FL 33440

Augustine Asbury
Alabama-Quassarte Tribal Town
P.O. Box 187
Wetumpka, OK 74883

Earl Babry
Tunica-Biloxi Tribe
P.O. Box 1589
Marksville, LA 71351

Brian Barr
Camas Land Use Consulting
P.O. Box 163
Gold Hill, OR 97525

Cynthia Bohn
U.S. Fish & Wildlife Service
Ecological Services
1875 Century Blvd NE, #200
Atlanta, GA 30345

Pare Bowlegs
Seminole Nation of Oklahoma
P.O. Box 1498
Wewoka, OK 74884

Nelson Brooke
Black Warrior Riverkeeper
712 37th Street South
Birmingham, AL 35222

Elizabeth Brown
Alabama Department of Archives and
History
468 South Perry Street
Montgomery, AL 36130-0900

Prescott Brownell
National Marine Fisheries Service
217 Fort Johnson Road
Charleston, SC 29412

Kenneth Carleton
Mississippi Band of Choctaw Indians
P.O. Box 6257
Choctaw, MS 39350

Stephen Cauthen
Alabama Soil & Water Conservation
Committee
P.O. Box 304800
Montgomery, AL 36130-4800

Bryant Celestine
Alabama-Coushatta Tribes of Texas
571 State Park Road 56
Livingston, TX 77351

Charles Coleman
Thlopthlocco Tribal Town
Route 1, Box 190-A
Weleetka, OK 74880

Stan Cook
Alabama Department of Conservation &
Natural Resources
Fisheries Section
64 North Union Street
Montgomery, AL 36130

James Curry
US Army Corps of Engineers

Arthur Davis
208 Cannon H.O.B.
Washington, DC 20515

Mark Easterwood
ADCNR
State Parks Division
64 North Union Street
Montgomery, AL 36130

Mike Eubanks
United States Army Corp of Engineers
109 Saint Joseph Street
Mobile, AL 36628

Chris Goodman
ADEM
P.O. Box 301463
Montgomery, AL 36130-1463

Chris Greene
ADCNR
64 North Union Street, Suite 658
Montgomery, AL 36130

Janice Hamilton
Public Service Commission
100 North Union Street, Suite 950
Montgomery, AL 36130

John Harrington
U.S. Department of Interior
Office of The Solicitor
75 Spring Street SW, Suite 304
Atlanta, GA 30303

Stacye Hathorn
Alabama Historical Commission
468 South Perry Street
Montgomery, AL 36104

Bobby Herndon
City of Northport
Northport City Hall
3500 McFarland Blvd.
Northport, AL 35476

Delores Herrod
Kialegee Tribal Town of the Muscogee
(Creek) Nation
P.O. Box 332
108 North Main Street
Wetumpka, OK 74883

Amanda Hill
Alabama Historical Commission
468 South Perry Street
Montgomery, AL 36104

Jim Howard
Alabama B.A.S.S. Federation
501 Five Mile Road
Eufaula, AL 36027

Ted Isham
Muscogee (Creek) Nation of Oklahoma
P.O. Box 580
Okmulgee, OK 74447

Wendy Jackson
Freshwater Land Trust
Box 549071, 900 Arkadelphia Road
Birmingham Southern College
Birmingham, AL 35254

Eve Joy
National Marine Fisheries Service
263 13th Avenue South, Suite 177
St. Petersburg, FL 33701

Troy King
Alabama Office of Attorney General
500 Dexter Avenue
Montgomery, AL 36130

Lance LeFleur
ADEM
P.O. Box 301463
Montgomery, AL 36130-1463

Fred Leslie
ADEM
1350 Coliseum Blvd.
Montgomery, AL 36130

Tom Littlepage
Alabama Office of Water Resources
401 Adams Avenue, Suite 434
Montgomery, AL 36104

Walter Maddox
City of Tuscaloosa
P.O. Box 2089
Tuscaloosa, AL 35401

Bobby Miller
County Commissioner
714 Greensboro Avenue
Tuscaloosa, AL 35401

Howard Mindel
Unites States Army Corps of Engineers
60 Forsyth Street SW
Atlanta, GA 30303

R. Minton
ADCNR
Marine Resources Division
P.O. Box 189
Dauphin Island, AL 36528

Gary Moody
Alabama Department of Conservation and
Natural Resources
Wildlife Section
64 North Union Street
Montgomery, AL 36130

Jerry Moss
Alabama Department of Conservation and
Natural Resources
District 3 Office
PO Box 305
Northport, AL 35476

Reginal Murray
County Commissioner
714 Greensboro Avenue
Tuscaloosa, AL 35401

Gingy Nail
Chickasaw Nation
P.O. Box 1548
Ada, OK 74820

Nick Nichols
ADCNR - Fisheries
64 North Union Street, Suite 551
Montgomery, AL 36130

Christine Norris
Jena Band of Choctaw Indians
P.O. Box 14
Jena, LA 71342

Alabama of Conservation & Natural
Resources
Outdoor Recreation Section
64 North Union Street
Montgomery, AL 36130

Commanding Officer
U.S. Coast Guard
1500 South Broad Street #102
Mobile, AL 36605

Susan Parker
Public Service Commission
RSA Union Building
100 North Union Street, Suite 818
Montgomery, AL 36130

Bill Pearson
U.S. Fish and Wildlife Service
Daphne ES Field Office
1208-B Main Street
Daphne, AL 36526

Jeff Powell
US Fish and Wildlife Service
Daphne ES Field Office
1208-B Main Street
Daphne, AL 36526

Patti Powell
ADCNR
State Lands Division
64 North Union Street
Montgomery, AL 36130

Al Redding
Alabama Bass Federation
P.O. Box 190
Notasulga, AL 36866

Mitch Reid
Alabama Rivers Alliance
2027 2nd Avenue North, Suite A
Birmingham, AL 35203

Greg Rhinehart
Alabama Historical Commission
468 S. Perry Street
Montgomery, AL 36104

Matt Rice
American Rivers, Southeast Region
1001 Washington Street, Suite 301
Columbia, SC 29201

Steve Rider
ADCNR, WFF
64 North Union Street, Suite 658
Montgomery, AL 36130

Charles Scribner
Black Warrior Riverkeeper
712 37th Street South
Birmingham, AL 35222

John Seebach
American Rivers
Hydropower Reform Campaign
1101 14th Street NW, Suite 1400
Washington, DC 20005

Jeff Sessions
United States Senate
326 Russell Senate Office Building
Washington, DC 20510

Richard Shelby
United States Senate
304 Russell Senate Office Building
Washington, DC 20510

Erica Shelton-Nix
ADCNR
P.O. Box 721
Wetumpka, AL 36092

Lynn Sisk
Alabama Department of Environmental
Management
Water Division
P.O. Box 301463
Montgomery, AL 36130-1463

Willard S. Steele
Seminole Tribe of Florida
Ah-Tah-Thi-Ki Museum
HC 61 Box 21 A
Clewiston, FL 33440

Chuck Sumner
US Army Corps of Engineers
Attn: PD-EI
P.O. Box 2288
Mobile, AL 36628

Judy Takats
World Wildlife Fund
2021 21st Avenue South, Suite 200
Nashville, TN 37212

THPO Terry Cole
Choctaw Nation of Oklahoma
P.O. Drawer 1210
Durant, OK 74702

Lelyn Thomas
Coushatta Indian Tribe
P.O. Box 818
Elton, LA 70532

Debbie Thomas
Alabama-Coushatta Tribe of Texas
Route 3, Box 645
Livingston, TX 77351

Robert Thrower
Poarch Band of Creek Indians
5811 Jack Springs Road
Atmore, AL 36502

Charles Wagner
3700 Crestwood Parkway NW, 9th Floor
Duluth, GA 30096

Don Wallace
County Commissioner
714 Greensboro Avenue
Tuscaloosa, AL 35401

John Wathen
Friends of Hurricane Creek
P.O. Box 40836
Tuscaloosa, Alabama 35404

Brad Williams
Public Service Commission
P.O. Box 304260
Montgomery, AL 36130

Duane Winters
Bureau of Land Management
411 Briarwood Drive, Suite 404
Jackson, MS 39206

Diana Woods
United States Environmental Protection
Agency
61 Forsyth Street, SW
Suite 13th
Atlanta, GA 30303-8690

Charles Yanny
United States Army Corps of Engineers
P.O. Box 2288
Mobile, AL 36628

Gary Youngblood
County Commissioner
714 Greensboro Avenue
Tuscaloosa, AL 35401

Jeanne Edwards
Federal Energy Regulatory Commission
888 First Street, NE
Washington, DC 20426

HOLT PROJECT – FERC NO. 2203
JOINT AGENCY MEETING
TRANSCRIPTS

1
2
3
4
5
6
7
8
9
10
11
12
13
14
15
16
17
18
19
20
21
22
23

ALABAMA POWER COMPANY
HOLT PROJECT - FERC NO. 2203
JOINT AGENCY MEETING

DECEMBER 1, 2010
1:00 P.M. - 3:00 P.M.

ORIGINAL

IN ATTENDANCE

Barry Lovett, Alabama Power Company

Len Simmons, Alabama Power Company

Viki Pate, Alabama Power Company

Angie Anderegg, Alabama Power Company

Jason Powers, Alabama Power Company

Sinem Killic, Alabama Power Company

Amy Stewart, Alabama Power Company

Henry Mealing, Kleinschmidt Associates

Dave Anderson, Kleinschmidt Associates

Amanda Fleming, Kleinschmidt Associates

Jim Hancock, Balch & Bingham

Jeff Powell, U.S. Fish and Wildlife
Service

Lynn Sisk, Alabama Department of
Environmental Management

1
2
3
4
5
6
7
8
9
10
11
12
13
14
15
16
17
18
19
20
21
22
23

Chuck Sumner, U.S. Army Corps of
Engineers

Bailey Crane, U.S. Army Corps of
Engineers

David Hartin, Tuscaloosa Emergency
Management Agency

Nelson Brooke, Black Warrior Riverkeeper

Ericha Nix, Alabama Department of
Conservation and Natural Resources

Chris Greene, Alabama Department of
Conservation and Natural Resources

* * * * *

MR. LOVETT: Welcome. We're kicking off here the Joint Agency Meeting, as we refer to it as, the JAM meeting, for the Holt Project; and that is FERC Project Number 2203.

We're going to walk through a presentation here. And here is the agenda that we plan to follow (indicating). But, again, if something comes up, something you think you would like to raise as we move along, an issue, please, please do.

One thing we wanted to point out here, we have a few folks, as you know, with Kleinschmidt Associates and Kleinschmidt has been hired by Alabama Power Company to assist in the relicensing project and is consulting us in that process.

Subsequent to our distribution of the PAD document, this is an opportunity to discuss anything

1 that needs to be clarified with regard
2 to that document.

3 We have also, since our
4 last meeting, been granted the use of
5 the Traditional Licensing Process by the
6 FERC and Henry is going to discuss that
7 a little bit today.

8 And then we'll just go
9 over the time line. And we do have a
10 handout we'll give you on the time line
11 as we move ahead.

12 There is some focus also
13 in the PAD document of proposed studies
14 here in the process. And then
15 subsequent to that, we'll open it up to
16 any open discussion, questions and such.

17 So, again, this is part of
18 the relicensing process that FERC has
19 set up and, as we mentioned, the FERC
20 has now multiple processes that a
21 licensee can use, and we have been
22 granted the use of the Traditional
23 Licensing Process here.

1 The meeting, as we get
2 going here, will be facilitated by Henry
3 Mealing with Kleinschmidt. And we ask
4 that you just respect Henry's
5 responsibility that he has here.

6 MR. SIMMONS: With that said,
7 I'm going to talk a little bit about the
8 Holt Project, an overview of the
9 project, and some of the reasons we're
10 really here today, basically.

11 This project is licensed by the
12 Federal Energy Regulatory Commission.
13 We are trying to get a new license. The
14 one we have now expires August 31st of
15 2015.

16 The license includes a
17 powerhouse, scenic overlook,
18 transmission line, that we talked about
19 going down, and a small area in
20 tailrace, which is the discharge of the
21 unit.

22 Of course, the powerhouse is
23 located adjacent to the Corps of

1 Engineers Holt Lock and Dam. You can
2 see the dam belongs to the Corps of
3 Engineers. You can see that defined
4 separation there, on this side of the
5 powerhouse.

6 The other thing is, it's on the
7 Black Warrior River at mile marker 347.
8 It's in Holt, it's in Tuscaloosa
9 County. Glad to be in Tuscaloosa County
10 today.

11 The other thing is, the
12 Holt Reservoir is 32,096 acres and
13 extends upriver 19 miles to the Bankhead
14 Lock and Dam.

15 Couple of things here.
16 The total nameplate is 49,000
17 kilowatts.

18 A little information
19 there, the plant was upgraded in 2001
20 from 40,000 KW to 49,000. It basically
21 was an upgrade for power.

22 A couple other unique
23 things about the plant. The plant is

1 manned with four permanent employees.
2 They have a hydro team leader, two hydro
3 journeymen. When I say hydro
4 journeymen, those journeymen perform
5 tasks from anything from mechanical,
6 electrical to operations. They are
7 triple qualified.

8 We have a plant auxiliary,
9 which the plant auxiliary is here to
10 assist the hydro journeymen, take care
11 of the grounds and do all those other
12 things, make trips to town, such as
13 that.

14 There is a couple of
15 things that I'm really proud of that the
16 employees at this plant do to support
17 the Holt Reservoir. One is the Renew
18 Our Rivers Cleanup once a year on Holt
19 Lake and it is in partnership with the
20 Corps, and then the Clean Water
21 Partnership, Black Water Clean Water
22 Partnership.

23 The other thing I'm also

1 proud that we do here, the management
2 here participates in the Black
3 Water/Clean Water Partnership to help
4 make this a cleaner reservoir.

5 So those are a couple of
6 things we do at the plant.

7 The other thing, safety is
8 the number one priority at Holt Dam. We
9 have not had an accident in 20 years.
10 And that is a long time. Even though
11 you have got four people working here,
12 it's 365 days a year.

13 We do work one shift here
14 and we work Monday through Fridays. And
15 the unit is operated from Birmingham.
16 It's operated by the ACC hydrodesk.
17 They dispatch units. Basically, what
18 we're here for is to maintain and keep
19 them ready to run.

20 If you look at this next
21 slide, it's just a layout of kind of how
22 we get to Holt. This plant is called a
23 run of river plant. What that means is,

1 it has to have a reservoir somewhere to
2 release water so we can run.

3 So the reservoir for this
4 plant is Smith Lake. And it's off of
5 Sipsey Fork, north of Jasper, between
6 Cullman and Walker County line.

7 As you can see, the
8 tributaries, you've got the Mulberry
9 Fork and the Locust Fork. Smith dumps
10 into the Mulberry and they combine
11 somewhere around, if you know anything
12 about the river, Howton's at Southside,
13 it becomes Black Warrior. Then we go
14 through Bankhead. The river flows, it
15 comes all the way down to Holt and then
16 moves on down to the Tombigbee. Most
17 everybody is probably familiar with
18 that.

19 That is just a little
20 insert to show you the location of the
21 plant.

22 The next slide is another
23 location, little location map shows the

1 flow. Basically it puts in all the
2 locks.

3 As you can see there, you
4 have got Smith dumping in, you've got
5 Bankhead, Holt, and then you have got --
6 Samantha has a tributary coming in
7 there, you have Selden, all the way down
8 to Demopolis and the Mobile River.

9 Any questions before we
10 move on to this slide?

11 This slide has a couple of
12 bullets. One says: Alabama Power
13 operates the Holt Project using excess
14 water provided by United States Corps of
15 Engineers.

16 We do use that water and
17 we work with the Corps of Engineers to
18 control that flow through our ACC
19 reservoir management. They have a great
20 communication. We have got staff gauges
21 on both sides of the river. We check
22 each other to see if the forebay level
23 is correct.

1 I think it's important to
2 mention that there is a good
3 communication there between the Corps
4 and the Alabama hydrodesk.

5 This talks about some
6 operational restrictions. One of the
7 big restrictions, we have to maintain a
8 one foot variance. The full pool is
9 187, so that variance is from 187 to
10 186. We try to maintain that level of
11 foot.

12 That is really, basically,
13 the only operational restriction we have
14 here at Holt, other than right now, we
15 don't have a unit to run. We're not
16 proposing any operational changes.

17 MR. LOVETT: What we wanted to
18 do on this slide is just to identify the
19 FERC project boundary. And the
20 orientation here, north would be to the
21 left; is that right, Dave?

22 MR. MEALING: Yes.

23 MR. SIMMONS: The powerhouse is

1 kind of right, you can see us here, kind
2 of on the northwest side here and this
3 transmission line that you discussed
4 earlier.

5 MR. LOVETT: I got into, when
6 we started this process, was trying to
7 answer the question, where is the
8 project boundary, what is the nature of
9 the ownership. Because a lot of our
10 discussion in relicensing is project
11 impacts.

12 What we have determined so far
13 is there is roughly 50 acres within the
14 project boundary. But 32 of that is
15 owned by the Corps of Engineers. And
16 APC leases that from the Corps. And
17 that would be a lot of the area here,
18 adjacent to the plant, and there is some
19 federal lands here just to the south of
20 the river.

21 When the transmission line
22 comes out of the switch yard and then
23 across the river and on to the Holt

1 substation, all of that land is owned by
2 private interests and the right-of-way
3 is leased by Alabama Power, roughly 16
4 acres of land in that and ownership here
5 (indicating) is roughly three acres as
6 you cross the river owned by the State
7 of Alabama. Which takes us to Alabama
8 Power ownership, which we are going to
9 tie down very well, probably with a
10 survey as the months roll on.

11 The best I can determine now,
12 APC owns about an acre and a quarter,
13 maybe right about the footprint of the
14 powerhouse is APC ownership.

15 So to me that's pretty
16 different than our typical project but
17 then I would say similar to what we have
18 at Bankhead in the fact that you have an
19 APC hydro development on a Corps of
20 Engineers lock and dam.

21 MR. MEALING: My name is Henry
22 Mealing, many of you know me already,
23 I'm with Kleinschmidt.

1 As Barry noted, the size of the
2 project is very small. These are a few
3 photos we have. The dam itself, or the
4 powerhouse, and then there's the
5 tailrace on the right side and that's
6 the overlook that we have got here.

7 We had a site tour this
8 morning. You guys got to see that. And
9 the overlook, if you want to look at it
10 on the way out, as you go up the road
11 and turn to the right and the overlook
12 is right there.

13 The next slide, we're going to
14 talk a little bit about relicensing. We
15 met with you guys or a lot of you guys
16 back in February of this year and talked
17 to you about Alabama Power using the
18 traditional license process. And thank
19 you for your support. It was very
20 helpful to have your support. FERC has
21 authorized us to use the Traditional
22 Licensing Process.

23 That does not mean anything

1 about having input, we still have to go
2 through and get input from people. We
3 still have to identify the issues. We
4 still need to work with you to determine
5 what the project impacts are and try to
6 resolve those impacts.

7 Really, we're going to use
8 existing information where available, we
9 already identified some of the issues
10 that we think could be an issue with the
11 project.

12 I want to talk with you,
13 listen to what your issues might be,
14 what you think some of the solutions
15 might be, and want to review those study
16 plans and then implement those studies
17 this year.

18 We'll be talking with you
19 this spring. We're going to try to
20 start implementing some of this study
21 this year.

22 MR. LOVETT: This year
23 being 2011.

1 MR. MEALING: 2011. Thank you
2 for the correction.

3 And then ultimately what we
4 want to do out of those studies is
5 determine what we think are reasonable
6 protection, mitigation and enhancement
7 measures, and then, as you see here, we
8 need to file the license application on
9 or before October 31st, 2013.

10 Any questions on that?

11 Our next slide talks about
12 process milestones. And we actually
13 have a chart that Viki is going to hand
14 out. It gives you a lot of the
15 milestones that we have in a tabular
16 format so you can use this handout as we
17 go through the process.

18 And if you want to know
19 critical dates, they are on this chart.

20 Today's meeting is one of those
21 important times, we actually had three
22 consultation meetings with you guys back
23 in February, many of you. We issued the

1 preliminary application document and the
2 notice of intent and requested that FERC
3 give us a TLP process. They awarded
4 that.

5 And the first step in our
6 relicensing after that is today, having
7 the joint agency meeting during the
8 daytime, and then we'll have our public
9 meeting tonight where we take input from
10 the public. And we'll give this same
11 presentation tonight over in Tuscaloosa.

12 As we work through the
13 process again, we're going to be
14 identifying study plans that we need to
15 conduct, and we'll set up consultation
16 meetings with you.

17 When you first came in,
18 you were given a sheet for signing in.
19 And we need that information from you so
20 we can know at what level you want to
21 participate. If you want to participate
22 in developing studies or in reviewing
23 information that comes forward,

1 developing PM&Es, how much do you want
2 to be connected in the relicensing
3 process, or you just want us to tell you
4 when something new has been put on the
5 web site, so you can get it, stay
6 up-to-date on information.

7 So we need you to tell us
8 what you want to do for your agency, for
9 yourself, for the group you represent.

10 Then what we'll do, after
11 we do our studies, develop PM&Es, we'll
12 have a draft license application that
13 we'll put out for review. You'll have
14 some time to review that. Give us your
15 comments. We'll take your comments and
16 hopefully be able to incorporate
17 everything in for the final license
18 application which is due in 2013.

19 So pretty easy, right?
20 Straight forward.

21 MR. LOVETT: If I can add
22 there, for those of you not familiar
23 with a FERC relicensing process, the

1 application is filed in 2013. But the
2 current license doesn't expire until
3 2015. And that gives FERC staff
4 twenty-four months to review, to get
5 additional information and such, and
6 then possibly to issue the new license
7 right as the current license expires.

8 MR. MEALING: As Barry
9 mentioned earlier, FERC has a couple of
10 different relicensing processes. Some
11 of you may be involved at the Martin
12 relicense which is an ILP. Some of you
13 may have been involved with the Coosa
14 Warrior which was an ALP.

15 When you file the license,
16 typically FERC gets two years to decide
17 on what they want to finally do with the
18 license. On a traditional license
19 process, they'll actually do meetings.
20 After we turn in the license
21 application, they'll have public
22 meetings down here where you'll be
23 invited to those and you can come and

1 you can voice your complaints about this
2 didn't happen or you can give us an
3 endorsement and say we believe this was
4 a very well done relicense.

5 Alabama Power's goal has always
6 been to try to resolve all the issues
7 upfront, to try to reach agreement,
8 especially where reasonable, and to try
9 to send a complete package to FERC so
10 they can just basically accept it and we
11 all know what will come out in the
12 license. Because if we go into the
13 final license and everybody is in
14 disagreement, you never really have any
15 surety of what is really going to come
16 out at FERC.

17 That's one of their goals is to
18 work with you guys to develop reasonable
19 protection, mitigation, enhancement
20 alternatives and to submit that in as
21 part of the package in the license
22 application.

23 Next slide. And if you read

1 the Preliminary Application Document,
2 the PAD, in fact, if you don't have a
3 copy of that, we do have some copies
4 here today that are on the desk in front
5 of Barry, you are welcome to take one of
6 those with you. It's a rather long
7 document. But if you did read it, you
8 will see in that document there are
9 three studies that were identified and
10 actually had pretty much methods in the
11 scope identified of what we plan to do
12 in addressing the three issues.

13 The first issue is basically
14 baseline water quality. Alabama Power
15 does monitor this site. And Angie
16 Anderegg is here today, she can answer
17 specific questions about the water
18 quality sampling here. She is with
19 Environmental Affairs at Alabama Power.
20 And if you have specific questions about
21 that, she'll be glad to answer those for
22 you.

23 We're basically going to pull

1 together all the information we have
2 into a baseline water quality document
3 so we can provide that to you so you can
4 see how the plant has been running over
5 the past.

6 As Len Simmons said, we're not
7 planning on any changes, so there
8 shouldn't be a change from what you got
9 currently as to what will go into the
10 future.

11 Also, we identified a fish
12 entrainment and turbine mortality study
13 as part of this. What we believe would
14 be reasonable is to do a desk top
15 analysis, is what we propose, to
16 determine what potential impact the
17 project operation might have on the
18 fishing community. And also there is a
19 rare, threatened and endangered species
20 assessment as the third component that
21 we identified. And that would apply to,
22 as Barry noted, the project boundary.
23 We would be looking at the tailrace for

1 any mussels or snails that might be
2 there. It may involve some fishery
3 sampling, if the Fish and Wildlife
4 Service sees we need to sample for
5 fish.

6 On the transmission line, we
7 would actually look at the types of
8 habitat that are available there, make
9 sure there is no T&E species in the
10 transmission line or the boundary, and
11 we would bring that back and present
12 that to you guys and use that as part of
13 our PM&E.

14 Any questions on those three
15 studies that you might have now?

16 Next slide. If you or your
17 group wants to request additional
18 studies, there is a process for that.
19 And what we would like you to do is,
20 this presentation will be available on
21 the Alabama Power web site within about
22 two weeks of today. Viki Pate will be
23 putting that on the web site and you'll

1 be able to get this presentation and
2 look back at anything in it for your
3 files.

4 And part of that whole study
5 request process, we have taken this from
6 FERC's directives of trying to figure
7 out, I'm not going to read all these,
8 but trying to figure out how your issue,
9 how it has a nexus back to the project,
10 how the project operations has a
11 specific nexus to your issue. That is
12 what we need you to tell us.

13 If you have identified an issue
14 and you want us to study it, we would
15 ask you to go through and try to answer
16 each one of these directives here to
17 help us understand how it relates to the
18 project and as justification to move
19 forward.

20 Now it's just the open
21 discussion, question and answer time.

22 We have got it broken down by,
23 first of all, asking about the PAD.

1 Were there any questions you
2 guys had about the PAD, any information
3 presented in there? Thought it was a
4 good document, haven't read it?

5 MR. LOVETT: Plan to read it.

6 MR. MEALING: Plan to read it
7 someday.

8 MR. LOVETT: Henry, as you
9 raise that question, the deadline for
10 actually providing comments and such on
11 the PAD I think is shown in that
12 schedule, is it not, of when the
13 deadline for comments is?

14 MR. MEALING: It's on the next
15 slide we have, it will be February 1st,
16 2011, where we'll take your comments.
17 That will be the deadline for taking
18 comments on the PAD.

19 Now, the TLP is not as driven
20 time-wise as the ILP is. If you have
21 been involved with that, there is
22 deadline, after deadline, after
23 deadline.

1 With the TLP, we have got a
2 little bit of flexibility. We didn't
3 have flexibility about the first couple
4 of things. One was the JAM and also
5 would be taking the comments on the
6 PAD.

7 So if you have got anything
8 that's from today or things you have
9 read in the past, please get us your
10 comments as close to that date as you
11 can.

12 Any questions, comments?
13 Everybody get a PAD?

14 MS. NIX: I have a question.
15 There is 53 acres and that is mostly
16 surrounding the powerhouse. Sixteen
17 acres at least of that 53 is leased from
18 private landowners, and so we only have
19 about 1.25 acres there.

20 MR. LOVETT: 1.25 owned in fee
21 by Alabama Power. All of that is in the
22 project. But I was just trying to
23 identify the nature of the ownership

1 within the entire project.

2 MR. MEALING: Other questions
3 about the PAD?

4 MR. SUMNER: Y'all mentioned
5 that there would be no operational
6 changes proposed. How about any other
7 changes: Structural, anything?

8 MR. SIMMONS: None. No
9 changes.

10 MR. MEALING: We talked with
11 Lynn and he said the upgrade done back
12 in 2001 brought the unit up by 9
13 megawatts and that's the most -- keeping
14 the unit online and running it currently
15 as it is which is their goal.

16 MR. SIMMONS: Nothing other
17 than the normal O&A stuff where we have
18 diver inspections and things like that.
19 That is not a change.

20 MR. LOVETT: That doesn't,
21 however, rule out, again, consultation
22 or if something comes up, another issue,
23 a new issue, if there is -- agreed that

1 Alabama Power needs to, say, help
2 enhance the scenic overlook or something
3 like that.

4 I think the thrust here was to
5 say that when it comes to operations,
6 there are no significant changes planned
7 here, moving ahead that those changes
8 were captured through the consultation
9 and such that took place with the
10 upgrades that were, what, nine years
11 ago, turbine replacement.

12 MR. MEALING: Any other
13 questions? What about the three
14 proposed studies that we have right
15 now? Is there anything that you would
16 like to ask about that or comment on or
17 other things you're concerned about?

18 MR. GREENE: One question I
19 have is about recreation on the
20 tailrace. Some of the tailrace bank
21 area is owned by the Power Company.
22 Would there be opportunities -- I'm not
23 that familiar with this project or how

1 much tailrace fishing actually goes on
2 here. Would there be an opportunity to
3 enhance that bank, tailrace fishing
4 bank?

5 MR. MEALING: That is a good
6 question. I think that is something
7 that was asked, I think a year ago, and
8 we have been trying to figure out just
9 exactly what, as Barry said, we're
10 searching out to see what Alabama Power
11 owns in fee and anything they did, they
12 want to do it in a safe manner also.

13 I think putting that out there
14 on the table is a very reasonable thing
15 to ask about.

16 MR. LOVETT: And I think,
17 Chris, we're also in consultation with
18 the Corps, need to really, as we look
19 ahead, how do we interface there, how
20 does the Corps see those, the recreation
21 possibilities, the scenic overlook and
22 therein the tailrace. Because I think
23 use numbers are shown by the Corps on

1 those sites.

2 So I see there being a good bit
3 of discussion on that also as division
4 of responsibilities.

5 But Henry, I think, really
6 touched on it. Chris raised the
7 question of the possibility, Len, of us
8 entertaining maybe enhancement of
9 tailrace fishing.

10 Henry's response, he said,
11 well, of course, safety will be at the
12 forefront. And I think right now there
13 are concerns, the nature of that area
14 with the large rip rap and its use, so
15 that would fold into any discussions on
16 enhancement and what about the public
17 safety issues that are there.

18 MR. SIMMONS: There are public
19 safety issues there. First the rock you
20 mentioned, rip rap is very large. We
21 don't have a lot of fishermen here.
22 Very few. I mean, I probably can count
23 this year, we probably have had no more

1 than five folks come out.

2 I don't think it's really that
3 popular of a spot. But there is a
4 public safety issue on those rocks. One
5 thing you get into with the public is
6 they are not in the habit of wearing
7 PFD, personal flotation devices, and
8 that gets to really be a problem.

9 MR. LOVETT: But we're open for
10 discussion.

11 MR. SIMMONS: It's something to
12 still discuss.

13 MR. LOVETT: I think also, I
14 don't want to speak for Len, but I
15 think, in some cases, we have had some
16 real concern, not only for the lack of
17 PFDs, but in some cases the lack of
18 supervision when adults bring in
19 children and they seem to be
20 unsupervised at a relatively challenging
21 site; that concerns us a lot also.

22 MR. MEALING: Other issues that
23 hadn't been identified?

1 MR. SUMNER: Do you have any
2 information at this point on the
3 geographic limits and the parameters
4 that you'll be looking at in your water
5 quality study?

6 MR. MEALING: Yes. It will be
7 looking at what is coming in from the
8 forebay and what is going out in the
9 tailrace.

10 MR. SUMNER: Immediately being
11 discharged into the tailrace.

12 MR. MEALING: What's coming in
13 versus what is going out. We have the
14 baseline data and that is our geographic
15 scope that we established right now.

16 MS. ANDEREGG: We have forebay
17 and tailrace chemistry and D.O.
18 temperature profiles, I think, for about
19 30 or 40 years. We have a lot of data.

20 And then our annual monitoring,
21 like season data from June 31st through
22 September 30th, we monitor D.O. and
23 temp. We monitor that continuously

1 every year. We have a lot of data.

2 MR. POWELL: Is there, I can't
3 remember, is there a water quantity
4 component to study in that that links
5 flows from upstream and navigation and
6 how that is all tied to power
7 generation?

8 MR. MEALING: We haven't looked
9 at a water quantity. I know that
10 Alabama Power actually has a reservoir
11 regulation, this project is in a
12 reservoir regulation manual, so they
13 operate the project based on water
14 quantity coming in. Like Len said,
15 there is a restriction of the head flow
16 fluctuation.

17 Obviously water going through
18 the lock is water that goes away from
19 the tailrace. So they balance that now
20 under the current agreements.

21 If we needed to explain that
22 better, I guess we could, we can explain
23 that information better for you.

1 MR. POWELL: I think for public
2 information it would be helpful, as it
3 related to water quality, how water is
4 released through the project, how it's
5 delivered here from upstream and just
6 kind of making all of this make sense.

7 MR. LOVETT: Just mechanically
8 what transpires as far as movement of
9 the water from upstream to downstream, a
10 description walking through that?

11 MR. POWELL: Yes.

12 MR. MEALING: There is three
13 options for passing water through the
14 project. One is through the navigation
15 lock, one is from spill gates, one is
16 through the turbine. That's basically
17 it.

18 And we have information on
19 water quality coming through the
20 turbine. We do not have water quality
21 information on what comes through the
22 lock or in the spill gates.

23 And if that is something you

1 feel would be really crucial to the Fish
2 and Wildlife Service, let us know in
3 your comments.

4 MR. POWELL: This is much
5 different than the other projects
6 because the Corps is on one side and
7 Alabama Power is on the other side.

8 MR. LOVETT: Yes.

9 MR. POWELL: It would help me
10 understand the water balance.

11 MR. MEALING: Lynn, if there is
12 something in there that you guys
13 specifically want, let us know.

14 MR. LOVETT: I guess, y'all
15 help me here, I would think that with
16 that upgrade that took place, it was
17 probably a pretty good gathering of the
18 existing data pulled together and
19 discussed at that time in '01, '02 with
20 the upgrade.

21 MR. SISK: That is what I
22 remember.

23 MR. MEALING: My last bullet

1 down here, data/information,
2 questions -- if you have data out there
3 that you know was not included in the
4 PAD, we would really appreciate you
5 forwarding that to us so we can include
6 it in there and make a more complete
7 document. If you are aware of a study
8 that went on that would be applicable or
9 anything that you think we should know
10 about, please let us know so that we can
11 include that information.

12 MR. BROOKE: In the, either the
13 fish entrainment or mortality or the T&E
14 species study, are y'all looking at the
15 migration of native species like the
16 Gulf walleye or sturgeon or paddle fish
17 or anything like that, the fact that the
18 operation of the turbine would have on
19 those?

20 MR. MEALING: If we're aware of
21 certain species that might be present,
22 we could actually include them in the
23 analysis. We'll work with you guys to

1 find out what species are in there.

2 If you have got information on
3 species or currents in the reservoir and
4 in the tailrace, we'll try to address
5 that to whatever level we can.

6 MR. BROOKE: One other question
7 I had was about, I notice there was an
8 initial tribal consultation meeting.
9 And I didn't know if y'all were aware of
10 the presence of the bear meat path
11 through this area, the ancient trail
12 that was used?

13 MR. MEALING: I'm not sure
14 we're aware of that. But because we own
15 such or Alabama Power only owns in fees
16 1.5, that really small area versus the
17 others in leases, we're not sure there
18 is going to be much of a cultural
19 resource issue on this but we're waiting
20 to hear back from Alabama and from the
21 tribes.

22 MR. BROOKE: I think the only
23 opportunity for that to cross your

1 project area would probably be in the
2 power line right-of-way, if even. I
3 just wanted to make sure y'all are aware
4 of it.

5 MR. LOVETT: In maybe a little
6 bit more detail, what was the question?

7 MR. BROOKE: I was just
8 wondering if y'all were aware of the
9 bear meat path being in the area.

10 MR. LOVETT: Bear meat?

11 MR. BROOKE: Bear meat. It was
12 an ancient trade route from either side
13 of the river connecting two travel
14 territories. And it crossed the river
15 at the Shoals, what was the Shoals
16 downstream here, right near the mouth of
17 Hurricane Creek. And that was a really
18 well known gathering ground and trade
19 route and meeting place.

20 It might intersect with your
21 transmission line on the other side of
22 the river.

23 MR. MEALING: We appreciate

1 that information, Nelson, that is
2 exactly what we're looking for, things
3 like that, so when we meet with the
4 tribes or cultural resources, we can
5 make sure those issues are addressed.

6 MR. LOVETT: That part of the
7 relicensing is driven by FERC staff,
8 right?

9 MR. MEALING: Pretty much. The
10 way that whole process is set up, the
11 tribes will only consult with a federal
12 entity because they believe they're --
13 they want to consult with somebody who
14 is their same equal status. Alabama
15 Power is not their equal status, so they
16 will not consult with the power company
17 or an agency, they want to talk with the
18 U.S. Government.

19 So that whole process for doing
20 that with the tribes has to go on at the
21 FERC level. What Alabama Power will do
22 at our end is we have people in
23 environmental affairs that will consult

1 with the Alabama Historical Commission
2 and they will check and see what their
3 issues might be. But because all those
4 sites are top secret, you are not
5 supposed to know where cultural resource
6 sites are, you probably will never find
7 out if there are any there or not, but
8 we will satisfy the historical
9 commission requirements for the site.

10 MR. LOVETT: And I can say in
11 the midst of our Warrior relicensing
12 that took in the Smith development and
13 the Bankhead development, that issue was
14 not raised. So I'm not even sure if
15 that trail takes in any of that area.
16 But that issue wasn't raised.

17 But, of course, all the
18 appropriate Bureau of Indian Affairs,
19 all the appropriate tribes were given
20 the opportunity to participate in that.
21 The primary participation was the
22 Mississippi Band of Choctaws.

23 MR. BROOKE: I think,

1 unfortunately, most of them were carted
2 out of here. They are not really around
3 to represent anymore.

4 MR. MEALING: Other information
5 like Nelson had, any other information
6 that you're aware of or that you would
7 like to bring up here?

8 And if you come upon something
9 in the next couple of weeks as you're
10 getting your comments ready, please,
11 don't hesitate to include that for us,
12 we would really appreciate it.

13 The next slide. And I think
14 this is the next step to where we're
15 going, discuss the information that we
16 have in the PAD, modify, if necessary,
17 and then we're going to move forward
18 with some of the proposed studies that
19 we have included in that PAD.

20 We'll be setting up a meeting,
21 based on the information that you give
22 us today, we'll be setting up our next
23 meeting to find out who is interested in

1 helping develop study plans and we'll
2 meet to hash those out, see what our
3 proposed methods are, see if there is
4 anything that you would like in that and
5 we'll work through that.

6 Again, the comment period for
7 the PAD ends on February 1st, 2011. And
8 then in 2011, we'll try to conduct all
9 the studies during that one year and get
10 that information back to you, discuss
11 and then start working on our PM&E
12 measures. Those are our next marching
13 steps through the next six to eight
14 months.

15 MR. LOVETT: Each of those are
16 broken out in considerable detail in
17 this time line that you were given.

18 As we move forward through this
19 process, if questions come up, contact
20 Viki Pate or myself, and I guess my
21 recommendation is, as Henry mentioned
22 earlier, I suggest we make a strong
23 attempt to answer our questions, to

1 resolve the issues up front prior to
2 filing our application. Historically, I
3 think, that has shown would be in
4 everybody's best interest to work it out
5 prior to filing our application with the
6 FERC. Please call us, email us. If
7 there are mailing problems,
8 communication problems, distribution
9 list problems, questions on the process,
10 the PAD, anything, just let us know.

11 MR. MEALING: To answer a
12 question Ericha has is, who do I send my
13 comments to. If you send your comments
14 by email to Barry or Viki, they will get
15 in the record, we will make sure that
16 they are eventually filed with FERC
17 because what we're trying to do is chart
18 the consultation procession progress.

19 As part of the TLP, when we
20 actually file that, that license
21 application, we'll have to have a huge
22 consultation section that shows where we
23 have gotten comments from you guys, how

1 we addressed them and those type of
2 things.

3 If you really feel like you
4 need to send something to FERC, fine.
5 It will be better if it comes from
6 Alabama Power first and we try and roll
7 it into the issues.

8 MR. LOVETT: I think the
9 comment was made earlier that this
10 presentation will be -- Viki will be
11 posting it on the web site. And also to
12 add to that, in the weeks ahead, we will
13 be filing the transcript for this. And
14 from that point on, it will be available
15 on the FERC web site. And it's their
16 E-library site where you could download
17 the document from there.

18 MR. MEALING: If anyone needs
19 help in trying to figure out how to use
20 the FERC web site, contact Viki, she can
21 walk you through that process. If she
22 can't get the answer, she knows who to
23 call to help you get through there and

1 get information on that site.

2 If anybody has a written
3 statement or anything they want to enter
4 into the record, this would be a good
5 time to go ahead and do that before we
6 close the meeting.

7 MR. LOVETT: Generally
8 speaking, we have gotten to the point,
9 over the years, in these processes where
10 more and more we can communicate via
11 email, and that is actually recognized
12 as consultation and communications. And
13 to me that is a real time saver over
14 formally typing out letters and such.
15 Just to throw that out to you. I know
16 we may still have some agencies that are
17 tied to the formal letter and such. But
18 we found that we can really move a lot
19 faster, and I think more efficiently,
20 through the email process and that can
21 be incorporated right on into the record
22 and such as we move ahead, for what it's
23 worth.

1 MR. MEALING: Any other
2 comments or questions? I would like for
3 you to stay if you have any questions or
4 anything else, we'll have some
5 one-on-one time.

6 We will close our official
7 session here.

8
9 * * * * *

1
2
3
4
5
6
7
8
9
10
11
12
13
14
15
16
17
18
19
20
21
22
23

ALABAMA POWER COMPANY
HOLT PROJECT - FERC NO. 2203

JOINT AGENCY MEETING

DECEMBER 1, 2010
7:00 P.M. - 9:00 P.M.

ORIGINAL

IN ATTENDANCE

Barry Lovett, Alabama Power Company

Len Simmons, Alabama Power Company

Jason Powers, Alabama Power Company

Henry Mealing, Kleinschmidt Associates

Dave Anderson, Kleinschmidt Associates

Amanda Fleming, Kleinschmidt Associates

Jim Hancock, Balch & Bingham

Chuck Sumner, U.S. Army Corps of
Engineers

David Hartin, Tuscaloosa Emergency
Management Agency

* * * * *

MR. LOVETT: This is the evening session for the public, as well as agencies, for the Holt Relicensing Process, subsequent to the distribution of the pre-application document and for the purpose of getting comments back on that document, as well as any comments, questions, clarifications with regard to the studies that were proposed in there, as well as any questions regarding the FERC relicensing process, the Traditional Licensing Process.

We have two agency representatives here this evening for this.

We'll let them introduce themselves now, as well as do the sign-in sheets.

MR. SUMNER: Chuck Sumner, Corps of Engineers, Planning and Environmental Division.

MR. HARTIN: David Hartin, City

1 of Tuscaloosa, Tuscaloosa County, EMA,
2 Emergency Management Agency.

3 MR. LOVETT: We have talked
4 with these gentlemen about whether or
5 not they would like for us to go through
6 our presentation again as they saw this
7 afternoon, and along with that, whether
8 or not they have any issues, additional
9 issues that they would like to present
10 or discuss this evening.

11 So I will leave it up to them
12 to respond to that.

13 MR. SUMNER: None here.

14 MR. HARTIN: None here.

15 MR. LOVETT: Do either of y'all
16 have a need to see the presentation
17 again and go through the information as
18 we did this afternoon?

19 MR. SUMNER: No.

20 MR. HARTIN: No.

21 MR. LOVETT: That being the
22 case, we will close out this meeting.

23 As we said, as we move forward

1 into the relicensing process, y'all have
2 the contact information for Viki Pate
3 and myself, let us know if things come
4 up as we move ahead.

5 With that, Henry, anything that
6 you see?

7 MR. MEALING: Thank you all for
8 coming.

9 MR. LOVETT: Thank you for
10 coming and being here. I look forward
11 to working with you on the relicensing.
12 Y'all have a good evening.

13 * * * * *

HOLT PROJECT – FERC NO. 2203
JOINT AGENCY MEETING
POWERPOINT PRESENTATION



HOLT PROJECT RELICENSING FERC NO. 2203

Agenda

2

- Introductions and Review Agenda
- Meeting Logistics
- Holt Project Overview
- The Traditional Licensing Process
- Timeline
- Holt Project Issues & Alabama Power Proposed Studies
- Open Discussion
- Contact Info and Next Steps

Meeting Purpose and Logistics

3

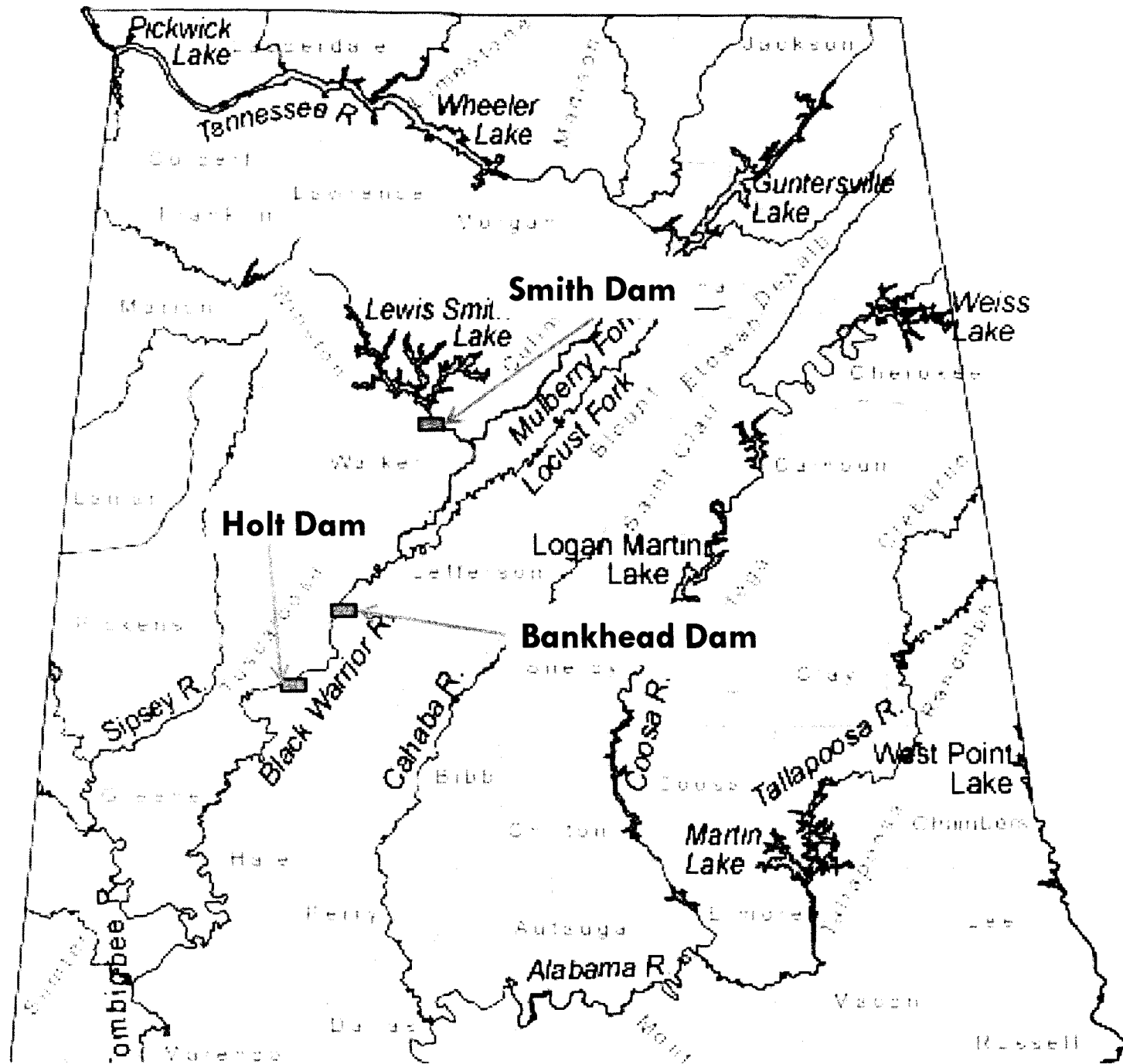
Purpose: Discuss/answer questions on the PAD and/or relicensing process for Holt and take comments on project issues

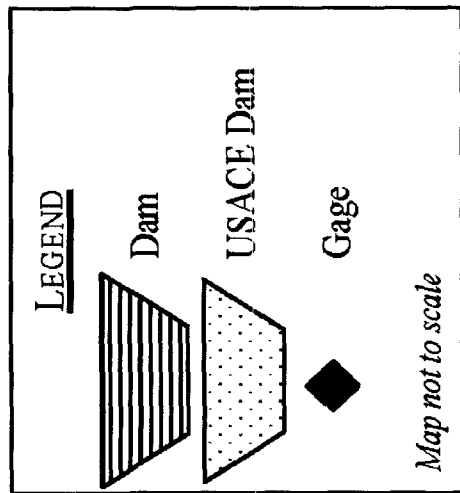
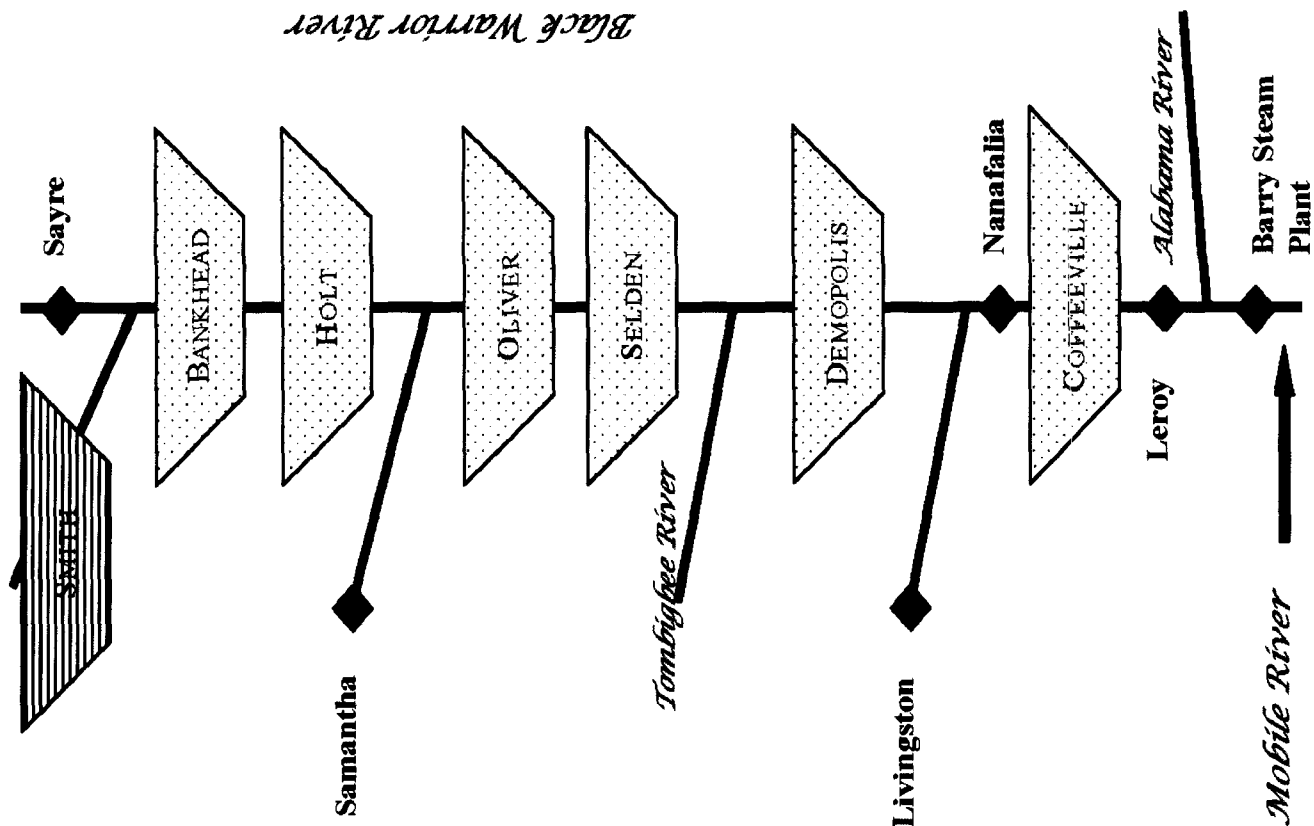
- ☐ Court reporter is making a written transcript of the meeting
- ☐ Everyone will have opportunity to speak (limited to 5 minutes)
- ☐ Use microphone – identify yourself and speak clearly
- ☐ Allow the facilitator to manage the meeting
- ☐ No talking when others are talking
- ☐ Silence cell phones/pagers
- ☐ If you need to take a call, please leave the room

Holt Project Overview

4

- ❑ Licensed by Federal Energy Regulatory Commission
 - ❑ License expires August 31, 2015
 - ❑ License includes powerhouse, scenic overlook, transmission line, small area in tailrace
- ❑ Powerhouse located adjacent to USACE Holt Lock and Dam
- ❑ Located on the Black Warrior River (RM 347.0) near Holt in Tuscaloosa County
- ❑ Holt Lake (USACE Reservoir)- 3,296 acres
 - ❑ Extends 19 miles upstream to USACE Bankhead Lock and Dam
- ❑ Total nameplate generating capacity - 49,000 kW
- ❑ One (1) Generating unit





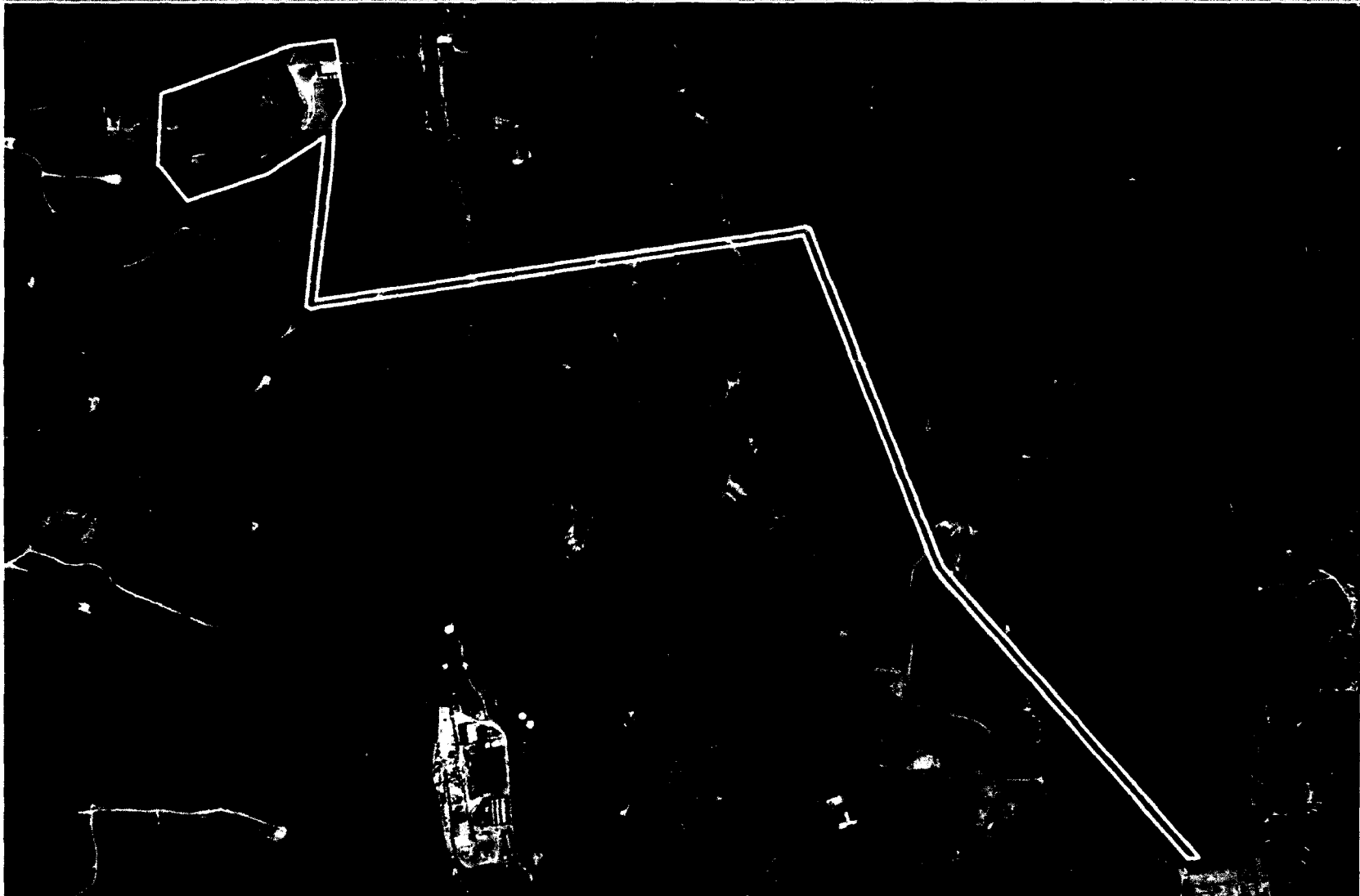
Holt Project Operation

7

- Alabama Power operates the Holt Project using excess water provided by USACE.
- Project has operational restrictions from the USACE
- No proposed operating changes

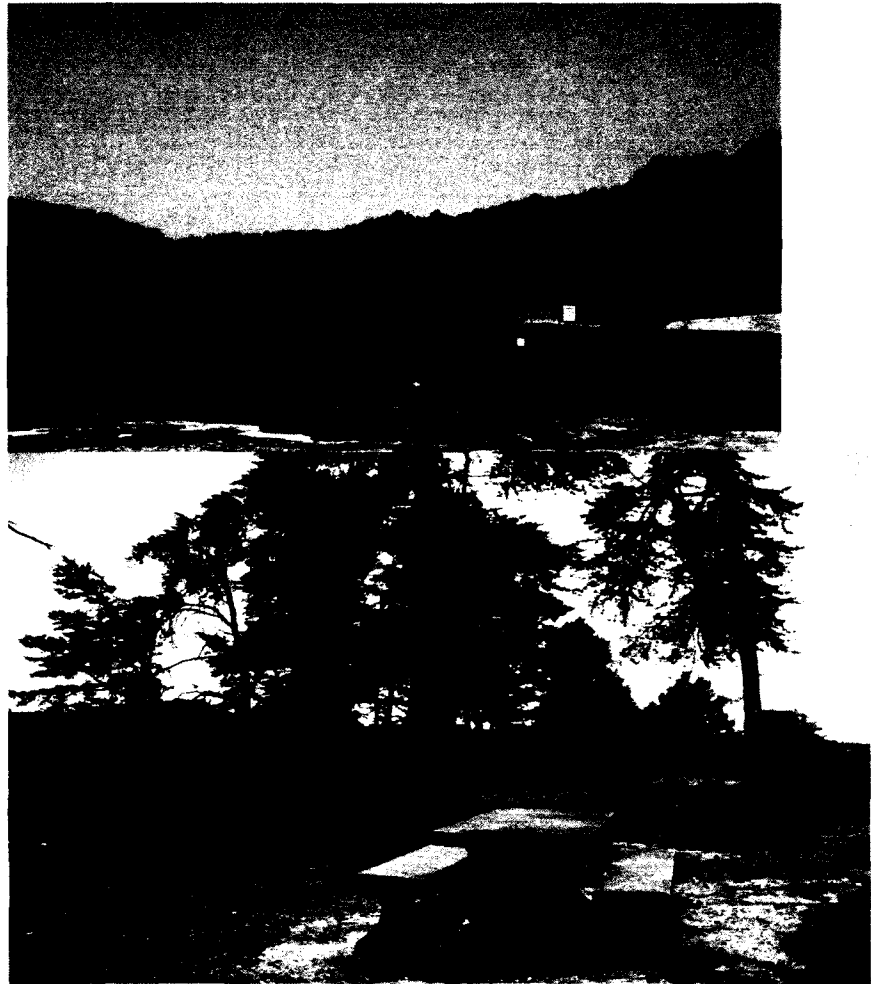
Project Boundary

8



Photos of Project

9



Relicensing the Holt Project

10

- Using the Traditional Licensing Process (TLP) with enhanced consultation
 - FERC approved on October 28, 2010
 - Focus consultation on resource agencies and interested stakeholders
- Identify resource issues and applicable data needs
- Use existing information where appropriate
- Obtain agency and stakeholder opinions regarding the Project and its potential effect on existing environmental/recreational/operational resources
- Review study plans and implement studies
- Determine appropriate Protection, Mitigation and Enhancement Measures to address potential project impacts, if any
- File the final license application on or before August 31, 2013

Process Milestones

11

- ❑ Pre-consultation meetings
- ❑ Issue PAD and Notice of Intent
- ❑ Site visit, Joint Agency Meeting (JAM) and public meeting
- ❑ Review Alabama Power study plans and conduct data collection
- ❑ Consultation meetings periodically during process
- ❑ Draft application
- ❑ Final application

Holt Project Issues & Proposed Studies

12

- **Baseline Water Quality**
- **Fish Entrainment and Turbine Mortality**
- **Rare, Threatened and Endangered Species Assessment**

Study or Information Requests

13

- ❑ Identify the purpose of the information.
- ❑ Demonstrate how the information is related to operation and maintenance of the Project, and therefore necessary.
- ❑ Discuss your understanding of resource issues and your goals and objectives for these resources.
- ❑ Explain why each recommended study methodology is more appropriate than alternatives, including any that Alabama Power has proposed.
- ❑ Document that each proposed study methodology is a generally accepted practice.
- ❑ Explain how the study will be used to further resource goals and objectives that may be affected by proposed operation of the Holt Hydroelectric Project.

Project Issues and Information Discussion

14

- Questions on the PAD, including proposed studies
- Other Project issues not identified
- Data/information questions

Next Steps

15

- Discuss information needs and modify, if necessary, the Alabama Power proposed study plans
- Comment period on PAD ends February 1, 2011
- Conduct Studies
- Discuss study results

Contact Info

16

- Barry Lovett

- bklovett@southernco.com

- 205-257-1268

- Viki Pate

- vipate@southernco.com

- 205-257-2211

- <http://www.alabamapower.com/hydro/holt.asp>

HOLT PROJECT – FERC NO. 2203

JOINT AGENCY MEETING

MEETING AGENDAS

AGENDA
Alabama Power Company
Holt Project - FERC No. 2203

Joint Agency Meeting

December 1, 2010
1:00 PM – 3:00 PM

Meeting Purpose: Discuss/answer questions on the PAD and/or relicensing process for Holt and take comments on project issues

1:00 – 1:20 PM	Introductions and Meeting Logistics
1:20 – 1:30 PM	Holt Project Overview
1:30 – 1:45 PM	The Traditional Licensing Process (TLP)
1:45 – 2:00 PM	Relicensing Timeline & Major Milestones
2:00 – 2:15 PM	Presentation of Alabama Power Proposed Studies for the Holt Relicensing
2:15 – 2:50 PM	Open Discussion of Holt Project PAD, Issues, Information Needs, and Studies
2:50 – 3:00 PM	Next Steps and Adjourn

AGENDA
Alabama Power Company
Holt Project - FERC No. 2203

Public Meeting

December 1, 2010
7:00 PM – 9:00 PM

Meeting Purpose: Discuss/answer questions on the PAD and/or relicensing process for Holt and take comments on project issues

7:00 – 7:20 PM	Introductions and Meeting Logistics
7:20 – 7:30 PM	Holt Project Overview
7:30 – 7:45 PM	The Traditional Licensing Process (TLP)
7:45 – 8:00 PM	Relicensing Timeline & Major Milestones
8:00 – 8:15 PM	Presentation of Alabama Power Proposed Studies for the Holt Relicensing
8:15 – 8:50 PM	Open Discussion of Holt Project PAD, Issues, Information Needs, and Studies
8:50 – 9:00 PM	Next Steps and Adjourn

HOLT PROJECT – FERC NO. 2203
JOINT AGENCY MEETING
TIMELINE

Holt TLP Timeline (updated December 1, 2010)

*Yellow highlighted text indicates completed tasks

ACTIVITY	RESPONSIBILITY	TIMEFRAME AND REGULATIONS (18 C.F.R.)	DATES
Distribute PAD, File NOI and Letter Requesting TLP	Alabama Power	§ 5.5 (b) and § 5.6 (a)	August 27, 2010
Initial Tribal Consultation Meeting	FERC	§ 5.7	September 27, 2010 (no later than)
Stakeholder Comments Due on TLP Request	Stakeholders	§ 16.8 (b)(3)(i)	September 27, 2010
FERC Issues Notice of Commencement of Scoping or Approval of Request to Use TLP	FERC	§ 5.8 (a)	October 26, 2010
Joint Agency and Public Meeting	Alabama Power	§ 16.8 (b)(A)	December 1, 2010
Comments on PAD and Study Requests Due from Stakeholders	Stakeholders		No later than 60 days after Joint Agency Meeting (December 2, 2010 to February 1, 2011)
Consultation and Development of Study Plans	Alabama Power and Stakeholders		Prior to conducting first year of studies
Conduct First Year Environmental Studies	Alabama Power		February 2011- January 2012
Conduct Engineering Studies, if Applicable	Alabama Power		February 2011- January 2012
Issue Draft Study Reports	Alabama Power		July 2012
Consultation on Study Results	Alabama Power and Stakeholders		Prior to preparing Stage II Studies, if deemed necessary
Prepare Stage II Study Plans, if Applicable	Alabama Power		April 2012

ACTIVITY	RESPONSIBILITY	COMPLETION AND REVISIONS DUE DATE	DATE
Consultation and Development of Additional Study Plans	Alabama Power and Stakeholders		Prior to conducting Stage II Studies, if applicable
Conduct Second Year Studies, if Applicable	Alabama Power		March 2012- January 2013
Prepare and Issue Stage II Study Reports, if applicable	Alabama Power		Prior to consultation on study results
Consultation on Study Results	Alabama Power and Stakeholders		Prior to Developing Draft License Application
Consultation on Proposed PME Measures	Alabama Power and Stakeholders		Prior to distributing the Draft License Application
Prepare Draft License Application	Alabama Power		March 2012- November 2012
Issue Draft License Application	Alabama Power		November 2012
Comments on Draft Application Due to Alabama Power	Stakeholders	90 day comment period	February 2013
Hold Stage II Meeting to Resolve Disputes, if needed	Alabama Power		March 2013
Additional Stakeholder Consultation, if applicable	Alabama Power and Stakeholders		Prior to filing Final License Application
File License Application	Alabama Power		August 2013
Issue Tender Filing Notice and Deficiency Letter, if Applicable	FERC		September 2013
Comments on Application and Additional Study Requests Due	Stakeholders		October 2013

ACTIVITY	RESPONSIBILITY	TIMEFRAME AND REGULATIONS (18 C.F.R.)	DATES
Response to Deficiencies, if Applicable	Alabama Power		December 2013
Issue Notice of Acceptance and Intervention	FERC		January 2014
Interventions Due	Stakeholders		March 2014
Issue Notice Ready for Environmental Assessment (EA) and Notice of Scoping Meetings	FERC		May 2014
File 401 Water Quality Certificate (WQC)	Alabama Power		July 2014
National Environmental Policy Act (NEPA) Scoping Meeting	FERC		July 2014
File Additional Information, if applicable	Alabama Power		December 2014
Issue Draft EA	FERC		April 2015
Issue Final EA	FERC		July 2015
License Expiration			August 31, 2015

HOLT PROJECT – FERC NO. 2203
JOINT AGENCY MEETING
FACT SHEET



[Residential](#) | [Business](#) | [Customer Service](#) | [Community](#) | [Environment](#) | [About Us](#)

About Us

Hydro Relicensing

Holt Project

Fact Sheet

Maps and Figures

The Process

PAD

NOI

Study Plans

Calendar

NEPA

Preliminary Licensing Proposal

Meeting Summaries and Presentations

APC Mailings

Stakeholder Correspondence

Contacts

Holt Fact Sheet



The Holt Project (FERC No. 2203) is located near Holt, Alabama on the Black Warrior River, in Tuscaloosa County. There are four lock and dams on the Black Warrior River operated by the U.S. Army Corps of Engineers (Lewis Smith Dam is also on the Black Warrior and is managed by Alabama Power), of which Holt is currently the 2nd dam from upstream to downstream. The existing license, issued by the Federal Energy Regulatory Commission in September 1965, expires on August 31, 2015. An application for a new license must be filed with the FERC on or before August 31, 2013.

Location

Town: Near Holt

County: Tuscaloosa

River: Black Warrior River

River Miles above Mobile: 347 miles

River Miles downstream of Bankhead Dam: 19 river miles

Original Construction Started: 1963

In-Service Date: August 15, 1968

Dam

Type: Gravity concrete

Spillway gates: 14 - 40 feet x 35 feet

Length: 680 feet

Height: 40 feet

Reservoir

Full Pool Elevation above sea level: 186.5 feet msl

Area: 3296 acres

Length: 19 miles

Maximum depth at dam: 80 feet

Headworks/Powerhouse

Length: 130 feet

Height: 100 feet

Gross Head: 60 feet

Hydraulic turbine

Type: Fixed-blade propeller

Horsepower at 60 feet head: 61,333

Total Plant Generating Capacity: 46 MW

Maximum Hydraulic Capacity: 11,200 cfs

Minimum Hydraulic Capacity: 1,000 cfs

More Information

The relicensing process includes many important terms and quite a few groups and departments represented by acronyms. Here's a [glossary](#) and an index of [acronyms](#) to help you keep it all straight.